

# Tubing Connector

## Technical Bulletin

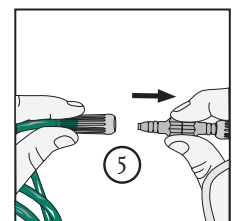
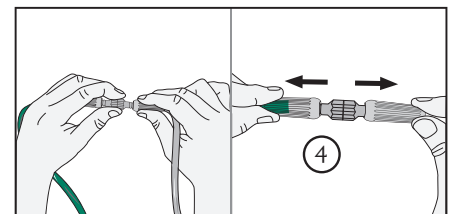
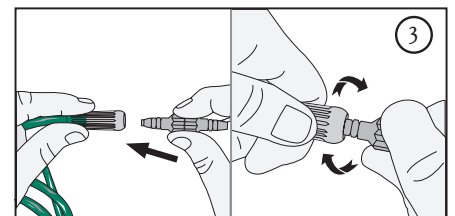
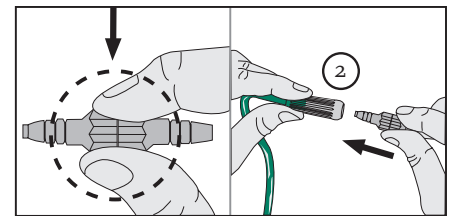
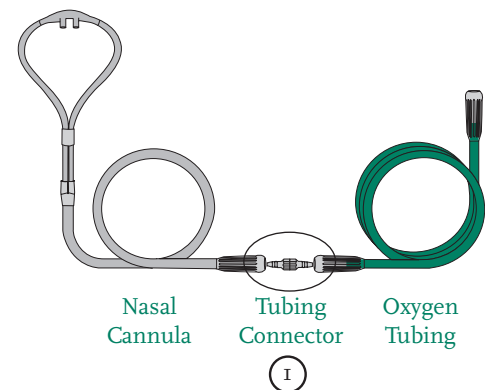
Please read and follow the Instructions for Use provided with your the Tubing Connector prior to use.

The Tubing Connector joins two pieces of oxygen tubing together. Intended to be used with patients who have a prescription for oxygen therapy in the home, outpatient, extended care, transport, and hospital environments. The Tubing Connector is available in swivel and non-swivel configuration.

### Product Use

1. Wash hands. Open package and remove Tubing Connector.
2. Hold the middle of the Tubing Connector and align the supply tubing end connector.
3. Insert, push, and twist the tapered end of the Tubing Connector into oxygen tubing end connector.
4. a–Repeat step 3 to attach the other side of the connector to the nasal cannula or oxygen mask tubing.  
b–Gently tug on connection to check for a secure fit.
5. To remove Swivel Connector, hold the center of the Tubing Connector, twist and pull on the tubing end connector.

*(Continued on the next page)*





# Technical Bulletin (continued)

## Troubleshooting

Problem	Possible Cause	Corrective Action
No oxygen flow from nasal prongs.	<ol style="list-style-type: none"><li>1. Flow control valve is not turned on.</li><li>2. Oxygen system is not functioning properly or oxygen container is empty.</li><li>3. The Swivel Connector is disconnected from tubing end connector.</li><li>4. Nasal cannula or oxygen tubing is kinked blocked, or damaged.</li></ol>	<ol style="list-style-type: none"><li>1. Ensure the concentrator is turned on. Set flow control to prescribe setting.</li><li>2. Check all tubing connections.</li><li>3. Reconnect the tubing.</li><li>4. Inspect cannula and oxygen tubing for kinks, occlusion, or damage.</li></ol>
The swivel does not rotate.	<ol style="list-style-type: none"><li>1. The swivel is damaged or defective.</li><li>2. The swivel mechanism is dirty.</li></ol>	<ol style="list-style-type: none"><li>1. Replace with a new Swivel Connector.</li><li>2. Clean the Swivel Connector.</li></ol>

## Safety Precautions

- Oxygen is a nonflammable gas, but does support combustion. Follow your homecare provider's instructions for the care and safe operation of your oxygen delivery system (e.g., oxygen cylinder, oxygen concentrator, liquid oxygen).
- Do not smoke or allow anyone to smoke around you when oxygen is used. 
- Keep oxygen equipment at least 6 feet away from flames or any heat source. 
- Do not use flammable products such as aerosol sprays, cleaning products near your oxygen.
- The length of the oxygen tubing plus nasal cannula should not exceed 57 feet to ensure enough pressure to deliver your set oxygen flowrate.
- Do not kink, bend or tie your oxygen tubing.
- Keep excess tubing loosely coiled and out of the way to prevent tripping on oxygen tubing.
- Use oxygen as prescribed by your doctor.
- Keep an extra Swivel Connector and other oxygen supplies available for backup.
- Swallowing hazard, do not let children or pets play with your oxygen equipment.