

Sensitive Grips

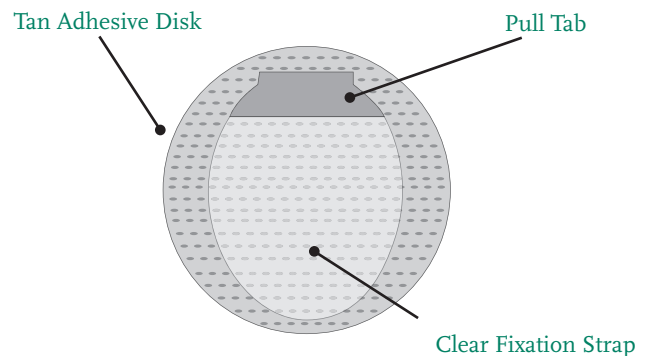
Technical Bulletin

Please read and follow the Instructions for Use provided with your products prior to using the Sensitive Grips.

Sensitive Grips are a fixation device used to hold nasal cannula tubing in place. Sensitive Grips are intended to be used by patients who have a prescription for oxygen therapy in the home, outpatient, extended care, transport and hospital environments.

Application Tips:

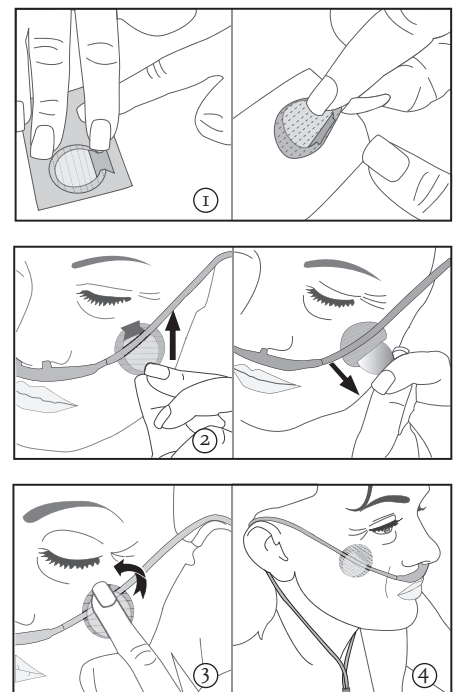
- Use a mirror or have someone assist you.
- Wash and dry your face prior to application.
- To identify correct placement for Sensitive Grips, first apply your nasal cannula.



Product use:

1. a–Open package and remove Sensitive Grips.
b–Fold back the Pull Tab. Peel the Sensitive Grip off the paper.
2. a–Center the Sensitive Grip on your cheek underneath the cannula tubing with the Pull Tab pointing upward, then press down on the Adhesive Disk to stick to the face.
b–Using pull tab, peel the fixation strap back until a resistance is felt.
c–Position the cannula tubing in the center of the Sensitive Grip between the tan adhesive disk and the clear fixation strap.
3. Place the Fixation Strap over the cannula tubing.
4. Repeat steps 1-4 to attach Sensitive Grip to the other cheek.
5. Replace Sensitive Grips every 48 hours or sooner if needed.

(Continued on the next page)



Instructions for Use (continued)

Troubleshooting

Problem	Possible Cause	Corrective Action
Skin rash and/or sores under Sensitive Grip	<ol style="list-style-type: none">1. Sensitivity/reaction to adhesive.2. Sensitive Grip was left on too long.	<ol style="list-style-type: none">1. Discontinue use. Contact your health care provider and/or doctor.2. Replace the Sensitive Grip at least once every 48 hours or more frequently if indicated.
Sensitive Grips will not stick	<ol style="list-style-type: none">1. Use of face lotion or cream.2. Excessive sweating.	<ol style="list-style-type: none">1. Wash and dry face before applying Sensitive Grip.2. Do not use Sensitive Grip.
Adhesive pulls at skin when removing Sensitive Grip	<ol style="list-style-type: none">1. Adhesive on Sensitive Grip is too tacky.	<ol style="list-style-type: none">1. Use a wet cloth with mild soap to slowly peel back the adhesive disc.

Safety Precautions

- Follow your homecare providers instructions for the care and safe operation of your oxygen delivery system.
- Do not place Sensitive Grips over open sores.
- Do not let children play with the Sensitive Grips.
- Keep a backup supply of Sensitive Grips and other oxygen equipment.